

Product Brochure

# PVC, UPVC, CPVC, GI and MS Puddle Flange

**For RCC tanks, underground sumps, STP, ETP, WTP, basements and waterproof pipe penetrations**

Floor Tech PVC Fabricators manufactures puddle flanges in Chennai for contractors, plumbers, waterproofing teams, MEP contractors and project suppliers. Each enquiry is reviewed based on pipe material, pipe size, quantity, BOQ, drawing, application and project location.

**Direct manufacturer support**

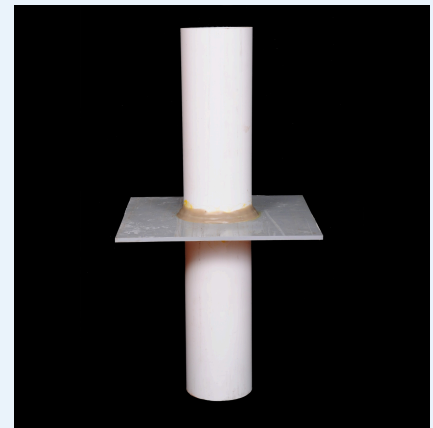
Custom fabrication for PVC, UPVC, CPVC, GI and MS puddle flange requirements.

**Water-stop function**

Helps create a barrier around pipe penetrations so water does not travel along the outside surface of the pipe.

**Project quotation basis**

Material, pipe size, puddle plate OD, wall / slab thickness, quantity and delivery location.



PVC puddle flange reference

## Where Puddle Flange is Used

Application	Typical Buyer / Project Use
RCC water tanks / underground sumps	Civil contractors, builders, waterproofing contractors
STP, ETP and WTP works	MEP, plumbing and water-treatment contractors
Basements, retaining walls and pump rooms	Pipe penetration waterproofing and service coordination
Septic tanks and overhead tanks	Water-retaining structures and plumbing works

## Material Options

Material	Typical Use / Note
PVC	General water-retaining structures using PVC pipe systems
UPVC	UPVC pipe penetration requirements in tanks, sumps, STP, ETP and WTP projects
CPVC	CPVC service-line / plumbing applications as per BOQ or project drawing
GI / MS	Metal pipe penetration requirements as per approved drawing and coating specification

## Common Puddle Flange Types

Type	Purpose / Typical Use
Centre plate puddle flange	Puddle plate positioned around the centre area of the pipe section.



Type	Purpose / Typical Use
Offset puddle flange	Plate position shifted to suit wall thickness, shuttering or site requirement.
Floor punching puddle flange	Used for pipe penetrations through slabs, sumps, bathrooms or similar RCC areas.
Plenum puddle flange	Single inlet with multiple outlets for project-specific chamber requirements.

## Floor Tech Strength Points

- Custom fabrication as per BOQ, drawing, pipe size and site requirement.
- PVC / UPVC / CPVC options can be supplied with coarse aggregate bonded surface where required.
- Lightweight plastic options for corrosion-resistance in suitable applications.
- GI and MS fabrication available where project specification requires metal pipe systems.
- Product photos and dispatch coordination can be provided for approved orders.

## Engineering Note

*Final material selection, dimensions, plate thickness, coating, waterproofing method and installation detail must follow the approved project drawing, BOQ and engineer / consultant instruction.*

**For quotation: send material, pipe size, quantity, project location and BOQ / drawing on WhatsApp +91 8667 408 543**